


AUGER BORING



PRODUCT TOOLING AND ACCESSORIES



**AMERICAN
AUGERS®**



American Augers Auger Boring History

American Augers has a long history in the Auger Boring Industry. Starting in 1970 with the first American Augers' auger boring machine built by Leo Barbera in Wooster, OH. Now, spanning almost 50 years in the auger boring industry, we pride ourselves in building quality tooling and providing industry-leading service from order to delivery out of our headquarters in West Salem, OH. No matter where the job is, if you need a part for your old workhouse or an accessory for a fresh off the line rig, we have people ready to help.

Over the years we have developed new rigs, better tooling, and updated our manufacturing practices to provide better products to the end user. As the industry changes, we adapt while still focusing on our core values.

When you partner with American Augers, you receive access to our industry experts on the phone or on the job site because we understand how important it is to keep your rigs up and running.



Table of Contents

Auger Sections

2-1/4" - 3" Hex	2
4" - 5" Hex	3

Auger Replacement Parts

Auger Bushing	5
Hex Drive Shank	5
Hex Adapter	6
Auger Flight	7
Hex Sleeve	8
Auger Shank Pin	8

Auger Boring Cutting Heads

All Purpose Cutting Head	9
HTR Cutting Head	11
Heavy Duty Rock Head	12
Roller Cone Cutting Head	13
Retractable Roller Cone Cutting Head	14

Casing and Saddle Adapters	15
---	-----------

Extension Track	18
------------------------------	-----------

Dutch Level	19
--------------------------	-----------

Steering Head Kits	20
---------------------------------	-----------

Bentonite Mixing System	21
--------------------------------------	-----------

Vandalism Shield	22
-------------------------------	-----------

AUGER SECTIONS

With over 40 years of Auger Boring experience, AUGER sections by American Augers have been developed with a best-in-industry design and are field proven to stand up to all types of horizontal boring jobs. Our Auger sections are a second-to-none piece of product tooling that promises to provide a long lasting & solid work life.

Part Number	Hex	Diameter	Length	Weight (lbs)
08AU5036	2-1/4"	8"	5'	130
08AU0036	2-1/4"	8"	10'	180
10AU5036	2-1/4"	10"	5'	140
10AU0036	2-1/4"	10"	10'	200
12AU5036	2-1/4"	12"	5'	180
12AU0036	2-1/4"	12"	10'	260
14AU5036	2-1/4"	14"	5'	200
14AU0036	2-1/4"	14"	10'	250
16AU5036	2-1/4"	16"	5'	230
16AU0036	2-1/4"	16"	10'	320
18AU0036	2-1/4"	18"	10'	360
20AU0036	2-1/4"	20"	10'	400
24AU0036	2-1/4"	24"	10'	570

Part Number	Hex	Diameter	Length	Flight	Weight (lbs)
10AU0048	3"	10"	10'	3/8"	360
12AU0048	3"	12"	10'	3/8"	400
14AU0048	3"	14"	10'	3/8"	440
16AU0048	3"	16"	10'	3/8"	470
18AU0048	3"	18"	10'	3/8"	490
20AU0048	3"	20"	10'	3/8"	525
24AU0048	3"	24"	10'	3/8"	700
30AU0048	3"	30"	10'	3/8"	705
36AU0048	3"	36"	10'	3/8"	900



AUGER SECTIONS

With over 40 years of Auger Boring experience, AUGER sections by American Augers have been developed with a best-in-industry design and are field proven to stand up to all types of horizontal boring jobs. Our Auger sections are a second-to-none piece of product tooling that promises to provide a long lasting & solid work life.

Part Number	Hex	Diameter	Length	Flight	
16AU0064	4"	16"	10'	3/8"	580
18AU0064	4"	18"	10'	3/8"	575
20AU0064	4"	20"	10'	3/8"	610
20AU0065	4"	20"	10'	1/2"	680
24AU0064	4"	24"	10'	3/8"	670
24AU0065	4"	24"	10'	1/2"	750
30AU0064	4"	30"	10'	3/8"	850
30AU0764	4"	30"	10'	1/2"	950
36AU0064	4"	36"	10'	3/8"	980
36AU0065	4"	36"	10'	1/2"	1185
40AU0064	4"	40"	10'	3/8"	1090
42AU0064	4"	42"	10'	3/8"	1230
42AU0065	4"	42"	10'	1/2"	1420
48AU0064	4"	48"	10'	3/8"	1480
48AU0065	4"	48"	10'	1/2"	1695

Part Number	Hex	Diameter	Length	Flight	Weight (lbs)
24AU0082	5"	24"	10'	1/2"	660
30AU0081	5"	30"	10'	1/2"	1105
36AU0081	5"	36"	10'	1/2"	1250
40AU0082	5"	40"	10'	1/2"	1450
42AU0081	5"	42"	10'	1/2"	1545
48AU0082	5"	48"	10'	1/2"	1805
54AU0082	5"	54"	10'	1/2"	2190
56AU0082	5"	56"	10'	1/2"	2375
60AU0082	5"	60"	10'	1/2"	2575
66AU0082	5"	66"	10'	1/2"	2985
70AU0082	5"	70"	10'	1/2"	3442
72AU0082	5"	72"	10'	1/2"	3442

Features and Benefits

- Manufactured with High Grade Plate and Mild Steel Tubing
- Hex Drives are 4140 alloy steel, heat treated for maximum strength
- 4", 6", and 8" helicoils are 1/4" plate with larger sizes being 3/8" plate
- Auger Bushings resist wear and are securely welded to the Auger Tube
- All Auger Sections sized to fit inside casing with 1/2" wall thickness

Auger Boring
Tooling and Accessories



AUGER REPLACEMENT PARTS



Auger Bushing

Bushing Part Number	Drive Shank Size	Weight (lbs)
11AU0336	2-1/4"	15
11AU0348	3"	20
11AU0364	4"	35
11AU0380	5"	55



Hex Drive Shank

Shank Part Number	Drive Shank Size	Weight (lbs)
11AU0436	2-1/4"	12
11AU0448	3"	25
11AU0464	4"	44
11AU0481	5"	75

Hex Adapter M x F

Part Number	Metric	Hex Adapters M x F	Weight (lbs)
36HA2136	57.2 x 57.2 mm	2-1/4 (M) x 2-1/4 (F)	27
48HA2136	57.2 x 76.2 mm	2-1/4 (M) x 3 (F)	34
48HA1236	76.2 x 57.2 mm	3 (M) x 2-1/4 (F)	39
48HA1248	76.2 x 76.2 mm	3 (M) x 3 (F)	47
64HA2148	76.2 x 101.6 mm	3 (M) x 4 (F)	64
64HA1264	101.6 X 101.6 mm	4 (M) x 4 (F)	81
64HA1266*	101.6 X 101.6 mm	4 (M) x 4 (F)	89
64HA1248	101.6 x 76.2 mm	4 (M) x 3 (F)	72
80HA2164	101.6 x 127mm	4 (M) x 5 (F)	100
80HA1464	127 x 101.6 mm	5(M) x 4 (F)	110
80HA1281	127 x 127 mm	5 (M) x 5 (F)	124
80HA1283*	127 x 127 mm	5 (M) x 5 (F)	142



* indicates 10" shoulder to shoulder

Bushing Part Number	Shank Part Number	Drive Shank Size	Weight (lbs)
48HA1136	57.2 x 76.2 mm	2-1/4 (M) x 3 (M)	20
64HA1148	101.6 x 76.2 mm	4 (M) x 3 (M)	35
80HA1164	127 x 101.6 mm	5 (M) x 4 (M)	57

Hex Adapter M x M



AUGER REPLACEMENT PARTS



Auger Flight Diameter Inch (mm)	2-1/4" Hex Part Number	3" Hex Part Number	4" Hex Part Number	5" Hex Part Number
12 (305)	12AU0236	12AU0248	N/A	N/A
14 (356)	14AU0236	14AU0248	N/A	N/A
16 (406)	16AU0236	16AU0248	16AU0264	N/A
18 (457)	18AU0236	18AU0248	18AU0264	N/A
20 (508)	20AU0236	20AU0248	20AU0264	N/A
24 (610)	24AU0236	24AU0248	24AU0264	24AU0282
30 (762)	N/A	30AU0248	30AU0264	30AU0280
36 (914)	N/A	36AU0248	36AU0264	36AU3280
40 (1016)	N/A	40AU0248	40AU0264	40AU0280
42 (1067)	N/A	42AU0248	42AU0264	42AU3280
48 (1219)	N/A	48AU0248	48AU0264	48AU0280
54 (1372)	N/A	N/A	54AU0264	54AU0282
60 (1524)	N/A	N/A	60AU0264	60AU0282
66 (1676)	N/A	N/A	66AU0264	66AU0282
72 (1829)	N/A	N/A	72AU0264	72AU0282

**All Flighting is 3/8" material except for 5" Hex is 1/2" material.*



Hex Sleeve

Part Number	Metric	Hex Sleeves	Weight (lbs)
80HA1264	127 X 101.6 mm	5" x 4"	18
627026	101.6 x 76.2 mm	4" x 3"	10
627025	76.2 x 57.2	3" x 2-1/4"	8

Part Number	Description	Hex Size
11AU0802	Auger Shank Loose 5/8 x 3-1/8	1-5/8"
11AU0812	Auger Shank Fixed 5/8 x 2-3/4	1-5/8"
11AU0803	Auger Shank Loose 3/4 x 4-1/4	2-1/4"
11AU0813	Auger Shank Fixed 3/4 x 3-3/4	2-1/4"
11AU0804	Auger Shank Loose 1 x 5-3/4	3"
11AU0814	Auger Shank Fixed 1 x 5-1/8	3"
11AU0805	Auger Shank Loose 1 x 7-3/8	4"
11AU0815	Auger Shank Fixed 1 x 6-1/4	4"
11AU0806	Auger Shank Loose 1 x 9-1/8	5"
11AU0816	Auger Shank Fixed 1 x 8-1/8	5"



Auger Shank Pins

AUGER BORING CUTTING HEADS



All Purpose Cutting Head

HTD Part Number	Size	Hex	Dia. Closed	Dia. Open	Lead Screw	Wing Cutter Assembly	Tooth	Tooth Pocket	Shank	Weight (lbs)
08CH7036	8"	2-1/4"	7.5	9.5	448003	686001	448004	449004	628033	38
10CH7036	10"	2-1/4"	9.5	12.25	448003	686002	448005	449002	628033	52
12CH7036	12"	2-1/4"	11.5	14.25	448003	686003	448005	449002	628033	62
14CH7036	14"	2-1/4"	12.5	15.5	448003	686003	448005	449002	628033	70
16CH7036	16"	2-1/4"	14.5	17.5	448003	686004	448005	449002	628033	77
18CH7036	18"	2-1/4"	16.5	19.5	448003	686004	448005	449002	628033	90
20CH7036	20"	2-1/4"	18.5	21.5	448003	686004	448006	449002	628033	115
24CH7036	24"	2-1/4"	22.5	25.5	448003	686004	448005	449002	628033	141
10CH7048	10"	3"	9.5	12.25	448003	686002	448005	449002	628030	69
12CH7048	12"	3"	11.5	14.25	448003	686003	448005	449002	628030	75
14CH7048	14"	3"	12.5	15.5	448003	686003	448005	449002	628030	83
16CH7048	16"	3"	14.5	17.5	448003	686004	448005	449002	628030	88
18CH7048	18"	3"	16.5	19.5	448003	686004	448005	449002	628030	110
20CH7048	20"	3"	18.5	21.5	448003	686004	448005	449002	628030	112
24CH7048	24"	3"	22.5	25.5	448003	686004	448006	449003	11AU0448	210
30CH7048	30"	3"	28.5	31.5	448003	686004	448006	449003	11AU0448	255
36CH7048	36"	3"	34.5	37.5	448003	686004	448006	449003	11AU0448	284

The HTD Cutting Head by American Augers is a versatile, field-proven, cutting head that is equipped with carbide cutting tips to handle dirt, soft rock, clay, sand, and other intrusive low impact ground materials.

All Purpose Cutting Head



HTD Part Number	Size	Hex	Dia. Closed	Dia. Open	Lead Screw	Wing Cutter Assembly	Tooth	Tooth Pocket	Shank	Weight (lbs)
16CH7064	16"	4"	14.5	17.5	448003	686004	448005	449002	628034	110
18CH7064	18"	4"	16.5	19.5	448003	686004	448005	449002	628034	125
20CH7064	20"	4"	18.5	21.5	448003	686004	448005	449002	628034	140
24CH7064	24"	4"	22.5	25.5	448003	686004	448006	449003	11AU0464	240
30CH7064	30"	4"	28.5	31.5	448003	686004	448006	449003	11AU0464	290
36CH7064	36"	4"	34.5	37.5	448003	686004	448006	449003	11AU0464	330
40CH7064	40"	4"	38	41.5	448003	686004	448006	449003	11AU0464	415
42CH7064	42"	4"	39	43.5	448003	686004	448006	449003	11AU0464	420
48CH7064	48"	4"	45	49.5	448003	686004	448006	449003	11AU0464	450
24CH7080	24"	5"	22.5	25.5	448003	686004	448006	449003	11AU0481	280
30CH7080	30"	5"	28.5	31.5	448003	686004	448006	449003	11AU0481	340
36CH7080	36"	5"	34.5	37.5	448003	686004	448006	449003	11AU0481	390
40CH7080	40"	5"	38	41.5	448003	686004	448006	449003	11AU0481	420
42CH7080	42"	5"	39	43.5	448003	686004	448006	449003	11AU0481	430
48CH7080	48"	5"	45	49.5	448003	686004	448006	449003	11AU0481	485
54CH7080	54"	5"	51	55.5	448003	686004	448006	449003	11AU0481	535
56CH7080	56"	5"	53	57.5	448003	686004	448006	449003	11AU0481	570
60CH7080	60"	5"	57	61.5	448003	686004	448006	449003	11AU0481	630
66CH7080	66"	63	67.5	73.5	448003	686004	448006	449003	11AU0481	680
72CH7080	72"	5"	69	73.5	448003	686004	448006	449003	11AU0481	735

**Other sizes available upon request.*

AUGER BORING CUTTING HEADS

HTR Cutting Head

HTR Part Number	Size	Hex	Dia.	Dia. Open	Lead Screw	Wing Cutter Assembly	Bullet Bit	Bit Holder	Shank	Weight (lbs)
08CH8036	8"	2-1/4"	7.5	9.5	448003	686006	448001	449010	682029	44
10CH8036	10"	2-1/4"	9.5	12.25	448003	686008	448001	449010	682029	60
12CH8036	12"	2-1/4"	11.5	14.25	448003	686008	448001	449010	682029	70
14CH8036	14"	2-1/4"	12.5	15.5	448003	686008	448001	449010	628029	80
16CH8036	16"	2-1/4"	14.5	17.5	N/A	686010	448001	449010	682033	93
18CH8036	18"	2-1/4"	16.5	19.5	N/A	686011	448001	449010	682033	110
20CH8036	20"	2-1/4"	18.5	21.5	N/A	686012	448001	449010	682033	117
24CH8036	24"	2-1/4"	22.5	25.5	N/A	686013	448001	449010	628033	164
10CH8048	10"	3"	9.5	12.25	448003	686008	448001	449010	628036	77
12CH8048	12"	3"	11.5	14.25	448003	686008	448001	449010	628036	83
14CH8048	14"	3"	12.5	15.5	448003	686008	448001	449010	628036	85
16CH8048	16"	3"	14.5	17.5	N/A	686010	448001	449010	628030	105
18CH8048	18"	3"	16.5	19.5	N/A	686011	448001	449010	628030	112
20CH8048	20"	3"	18.5	21.5	N/A	686012	448001	449010	628030	140
24CH8048	24"	3"	22.5	25.5	N/A	686013	448001	449010	11AU0448	205
30CH8048	30"	3"	28.5	31.5	N/A	686015	448001	449010	11AU0448	286
36CH8048	36"	3"	34.5	37.5	N/A	686016	448001	449010	11AU0448	340
16CH8064	16"	4"	14.5	17.5	N/A	686010	448001	449010	682034	102
18CH8064	18"	4"	16.5	19.5	N/A	686011	448001	449010	628034	145
20CH8064	20"	4"	18.5	21.5	N/A	686012	448001	449010	628034	160
24CH8064	24"	4"	22.5	25.5	N/A	686013	448001	449010	11AU0464	245
30CH8064	30"	4"	28.5	31.5	N/A	686015	448001	449010	11AU0464	340
36CH8064	36"	4"	34.5	37.5	N/A	686016	448001	449010	11AU0464	378
40CH8064	40"	4"	38	42	N/A	686016	448001	449010	11AU0464	425
42CH8064	42"	4"	39	44	N/A	686017	448001	449010	11AU0464	445
48CH8064	48"	4"	45	50	N/A	686017	448001	449010	11AU0464	475
24CH8080	24"	5"	22.5	25.5	N/A	686013	448001	449010	11AU0481	305
30CH8080	30"	5"	28.5	31.5	N/A	686015	448001	449010	11AU0481	360
36CH8080	36"	5"	34.5	37.5	N/A	686016	448001	449010	11AU0481	425
42CH8080	42"	5"	39	44	N/A	686017	448001	449010	11AU0481	490
48CH8080	48"	5"	45	50	N/A	686017	448001	449010	11AU0481	530
54CH8080	54"	5"	51	56	N/A	686017	448001	449010	11AU0481	570
60CH8080	60"	5"	57	62	N/A	686017	448001	449010	11AU0481	605
72CH8080	72"	5"	69	73.5	N/A	686017	448001	449010	11AU0481	820

Auger Boring
Tooling and Accessories

The Heavy Duty Rock Head by American Augers is the durable cutting head ideal for bores through soft rock formations, harp pan, shale, gravel, small boulders, and other like intrusive ground conditions up to 6,000 psi. (413.68 bar). The “vee” shape of the head provides self-centering action to help maintain line and grade. The head also features Tungsten carbide bullet bits that can be used at aggressive drill angles.



X-Mas Tree Part Number	Size	Hex	Lead Screw	Wing Cutter Assembly	Tooth	Tooth Pocket	Shank	Weight (lbs)
08RH5036	8"	2-1/4"	448020	08RH1400	448001	449010	08RH5211	45
10RH5036	10"	2-1/4"	448020	10RH5700	448001	449010	12RH5237	90
12RH5036	12"	2-1/4"	448020	12RH5700	448001	449010	12RH5237	100
14RH5036	14"	2-1/4"	448020	16RH5700	448001	449010	14RH5236	135
16RH5036	16"	2-1/4"	448020	16RH5700	448001	449010	11RH5036	168
18RH5036	18"	2-1/4"	448020	18RH5600	448001	449010	11RH5036	200
20RH5036	20"	2-1/4"	448020	24RH5700	448001	449010	11RH5036	230
12RH5048	12"	3"	448020	12RH5700	448001	449010	11RH5048	110
14RH5048	14"	3"	448020	16RH5700	448001	449010	11RH5048	132
16RH5048	16"	3"	448020	16RH5700	448001	449010	11RH5048	160
18RH5048	18"	3"	448020	18RH5600	448001	449010	11RH5048	228
20RH5048	20"	3"	448020	20RH5700	448001	449010	11RH5048	230
24RH5048	24"	3"	448020	24RH5700	448001	449010	11RH5048	410
30RH5048	30"	3"	448020	30RH5700	448001	449010	11AU0448	595
36RH5048	36"	3"	448020	36RH5700	448001	449010	11AU0448	850
16RH5064	16"	4"	448020	16RH5700	448001	449010	11RH5064	200
18RH5064	18"	4"	448020	18RH5600	448001	449010	11RH5064	240
20RH5064	20"	4"	448020	24RH5700	448001	449010	11RH5064	280
24RH5064	24"	4"	448020	24RH5700	448001	449010	11RH5064	445
30RH5064	30"	4"	448020	30RH5700	448001	449010	11RH5064	680
36RH5064	36"	4"	448020	36RH5700	448001	449010	11AU0464	880
1142RH5064	42"	4"	448020	36RH5700	448001	449010	11AU0464	986
48RH5064	48"	4"	448020	36RH5700	448001	449010	11AU0464	1165
24RH5080	24"	5"	448020	24RH5700	448001	449010	11AU0481	445
30RH5080	30"	5"	448020	30RH5700	448001	449010	11AU0481	655
36RH5080	36"	5"	448020	36RH5700	448001	449010	11AU0481	880
42RH5080	42"	5"	448020	36RH5700	448001	449010	11AU0481	986
48RH5080	48"	5"	448020	36RH5700	448001	449010	11AU0481	1410
54RH5080	54"	5"	448020	36RH5700	448001	449010	11AU0481	2040
60RH5080	60"	5"	448020	36RH5700	448001	449010	11AU0481	2735
66RH5080	66"	5"	448020	36RH5700	448001	449010	11AU0481	3550

AUGER BORING CUTTING HEADS

Roller Cone Cutting Head

SOFT FORMATION

HTD Part Number	Size	Hex	OD Cut	Shank	Weight (lbs)
12RC2148	12"	3"	14"	11AU0448	275
16RC2148	16"	3"	18"	11AU0448	455
16RC2164	16"	4"	18"	11AU0464	530
20RC2164	20"	4"	22"	11AU0464	605
24RC2164	24"	4"	26"	11AU0464	825
30RC2164	30"	4"	32"	11AU0464	1050
30RC2180	30"	5"	32"	11AU0481	1200
36RC2164	36"	4"	38"	11AU0464	1050
36RC2180	36"	5"	38"	11AU0481	1425
42RC2164	42"	4"	44"	11AU0464	1560
42RC2180	42"	5"	44"	11AU0491	1680
48RC2180	42"	5"	50"	11AU4081	2330

American Augers' Roller Cone Cutting heads are built to withstand various rock conditions. A partnership between Radius HDD and American Augers brings the latest technology in underground boring to our cutting heads.



**Other sizes available upon request.*

MEDIUM FORMATIONS

HTD Part Number	Size	Hex	Dia. Open	Shank	Weight (lbs)
12RC4148	12"	3"	14"	11AU0448	275
16RC3148	16"	3"	18"	11AU0448	455
16RC3164	16"	4"	18"	11AU0464	530
20RC3164	20"	4"	22"	11AU0464	605
24RC3164	24"	4"	26"	11AU0464	828
30RC3164	30"	4"	32"	11AU0464	1050
30RC3180	30"	5"	32"	11AU0481	1200
36RC3164	36"	4"	38"	11AU0464	1275
36RC3180	36"	5"	38"	11AU0481	1425
42RC3164	42"	4"	44"	11AU0464	1500
42RC3180	42"	5"	44"	11AU0481	1680
48RC3180	42"	5"	50"	11AU0481	2330

HARD FORMATIONS

HTD Part Number	Size	Hex	OD Cut	Shank	Weight (lbs)
12RC4148	12"	3"	14"	11AU0448	275
16RC4148	16"	3"	18"	11AU0448	455
16RC4164	16"	4"	18"	11AU0464	530
20RC4164	20"	4"	22"	11AU0464	605
24RC4164	24"	4"	26"	11AU0464	825
30RC4164	30"	4"	32"	11AU0464	1050
30RC4180	30"	5"	32"	11AU0481	1200
36RC4164	36"	4"	38"	11AU0464	1275
36RC4180	36"	5"	38"	11AU0481	1425
42RC4164	42"	4"	44"	11AU0464	1500
42RC4180	42"	5"	44"	11AU0481	1680
48RC4180	48"	5"	50"	11AU0481	2330

Retractable Roller Cone Cutting



SOFT FORMATION

HTD Part Number	Size	Hex	OD Cut	Shank	Weight (lbs)
20RC2164-R	20"	4"	22"	11AU0464	750
24RC2164-R	24"	4"	26"	11AU0464	850
30RC2164-R	30"	4"	32"	11AU0464	1040
30RC2180-R	30"	5"	32"	11AU0481	1220
36RC2164-R	36"	4"	38"	11AU0464	1650
36RC2180-R	36"	5"	38"	11AU0481	1730
42RC2164-R	42"	4"	44"	11AU0464	2230
42RC2180-R	42"	5"	44"	11AU0481	2410
48RC2180-R	42"	5"	50"	11AU0481	2850

MEDIUM FORMATIONS

HTD Part Number	Size	Hex	Dia. Open	Shank	Weight (lbs)
20RC3164-R	20"	4"	22"	11AU0464	750
24RC3164-R	24"	4"	26"	11AU0464	850
30RC3164-R	30"	4"	32"	11AU0464	1040
30RC3180-R	30"	5"	32"ξ	11AU0481	1220
36RC3164-R	36"	4"	38"	11AU0464	1650
36RC3180-R	36"	5"	38"	11AU0481	1730
42RC3164-R	42"	4"	44"	11AU0464	2230
42RC3180-R	42"	5"	44"	11AU0481	2410
48RC3180-R	42"	5"	50"	11AU0481	2850

American Augers' Retractable Roller Cone Cutting heads are the latest cutting heads to hit the auger boring industry. If you start your bore in dirt and hit hard rock, you can now insert a retractable roller cone cutting head into the casing and save yourself the time and money of pulling the casing to get back to work. This is the perfect cutting head to save your bore under railroads and highways.

HARD FORMATIONS

HTD Part Number	Size	Hex	OD Cut	Shank	Weight (lbs)
20RC4164-R	20"	4"	22"	11AU0464	750
24RC4164-R	24"	4"	26"	11AU0464	850
30RC4164-R	30"	4"	32"	11AU0464	1040
30RC4180-R	30"	5"	32"	11AU0481	1220
36RC4164-R	36"	4"	38"	11AU0464	1650
36RC4180-R	36"	5"	38"	11AU0481	1730
42RC4164-R	42"	4"	44"	11AU0464	2230
42RC4180-R	42"	5"	44"	11AU0481	2410
48RC4180-R	48"	5"	50"	11AU0481	2850

CASING AND SADDLE ADAPTERS

24-75, 24-100, 24-110, 24-150				
Casing Diameter	Casing Adapter	C.A. Weight	Saddle Adapter	S.A. Weight (lbs)
8" (203.2mm)	24CA0800	210	24SA0800	40
10" (254mm)	24CA1000	179	24SA1000	38
12" (304.8mm)	24CA1200	160	24SA1200	34
14" (355.6mm)	24CA1400	166	24SA1400	33
16" (406.4mm)	24CA1600	142	24SA1600	30
18" (457.2mm)	24CA1800	111	24SA1800	28
20" (508mm)	24CA2000	78	24SA2000	24

*If you have a 24" machine and need a 30" casing, call American Augers for price and availability. Please have your serial number ready when you call.

Casing Adapters by American Augers are a best-in-industry design that allows the casing adapter to be self-aligning, as the inside surface of the strut is tapered to ensure that the product casing centers itself, making this a far more efficient product in allowing increased auger boring precision.



30-170, 30-225				
Casing Diameter	Casing Adapter	C.A. Weight	Saddle Adapter	S.A. Weight (lbs)
8" (203.2mm)	30CA0800	325	30SA0800	54
10" (254mm)	30CA1000	315	30SA1000	52
12" (304.8mm)	30CA1200	300	30SA1200	50
14" (355.6mm)	30CA1400	280	30SA1400	48
16" (406.4mm)	30CA1600	265	30SA1600	46
18" (457.2mm)	30CA1800	250	30SA1800	46
20" (508mm)	30CA2000	240	30SA2000	45
24" (609.6mm)	30CA2400	235	30SA2400	42

Auger Boring
Tooling and Accessories

36-340, 36/42-440, 36-600				
Casing Diameter	Casing Adapter	C.A. Weight	Saddle Adapter	S.A. Weight (lbs)
12" (304.8mm)	36CA1200	512	36SA1200	65
14" (355.6mm)	36CA1400	500	36SA1400	64
16" (406.4mm)	36CA1600	480	36SA1600	62
18" (457.2mm)	36CA1800	453	36SA1800	60
20" (508mm)	36CA2000	428	36SA2000	58
24" (609.6mm)	36CA2400	447	36SA2400	54
30" (762mm)	36CA3000	370	36SA3000	44

*If you have a 36" machine and need a 42" casing, call American Augers for price and availability. Please have your serial number ready when you call.

42-600				
Casing Diameter	Casing Adapter	C.A. Weight	Saddle Adapter	S.A. Weight (lbs)
12" (304.8mm)	42CA1200	730	42SA1200	78
14" (355.6mm)	42CA1400	714	42SA1400	77
16" (406.4mm)	42CA1600	688	42SA1600	75
18" (457.2mm)	42CA1800	660	42SA1600	75
20" (508mm)	42CA2000	630	42SA2000	71
24" (609.6mm)	42CA2400	721	42SA2400	67
30" (762mm)	42CA3000	556	42SA3000	61
36" (914.4mm)	42CA3600	513	42SA3600	62



48-900, 48/54-900				
Casing Diameter	Casing Adapter	C.A. Weight	Saddle Adapter	S.A. Weight (lbs)
12" (304.8mm)	48CA1200	904	48SA1200	91
14" (355.6mm)	48CA1400	890	48SA1400	90
16" (406.4mm)	48CA1600	862	48SA1600	88
18" (457.2mm)	48CA1800	833	48SA1800	85
20" (508mm)	48CA2000	803	48SA2000	84
24" (609.6mm)	48CA2400	960	48SA2400	80
30" (762mm)	48CA3000	791	48SA3000	73
36" (914.4mm)	48CA3600	624	48SA3600	75
40" (1,016mm)	48CA4000	676	48SA4000	72

*If you have a 48" machine and need a 54" casing, call American Augers for price and availability. Please have your serial number ready when you call.

CASING AND SADDLE ADAPTERS



60-1200				
Casing Diameter	Casing Adapter	Casing Adapter Weight (lbs)	Saddle Adapter	Saddle Adapter Weight (lbs)
20" (508mm)	60CA2000	1400	60SA2000	110
24" (609.6mm)	60CA2400	1615	60SA2400	105
30" (762mm)	60CA3000	1430	60SA3000	99
36" (914.4mm)	60CA3600	1240	60SA3600	100
40" (1,016mm)	60CA4000	1100	60SA4000	97
42" (1,066.8mm)	60CA4200	1024	60SA4200	96
48" (1,219.2mm)	60CA4800	792	60SA4800	91
54" (1,371.6mm)	60CA5400	702	60SA5400	86
56" (1,422.4mm)	60CA5600	572	60SA5600	85

72 -1200				
Casing Diameter	Casing Adapter	Casing Adapter Weight (lbs)	Saddle Adapter	Saddle Adapter Weight (lbs)
24" (609.6mm)	72CA2400	2252	72SA2400	130
30" (762mm)	72CA3000	2067	72SA3000	124
36" (914.4mm)	72CA3600	1877	72SA3600	126
42" (1,066.8mm)	72CA4200	1662	72SA4200	121
48" (1,219.2mm)	72CA4800	1430	72SA4800	117
54" (1,371.6mm)	72CA5400	1181	72SA5400	112
60" (1,524mm)	72CA6000	917	72SA6000	107

BORING MACHINE EXTENSION TRACK



Extension Tracks by American Augers allows for maximized jobsite performance by being able to install longer product sections, and provides an increased working area for mobility and safety.

Boring Machine Model	Master Track Length	Additional Master Track P/N	Extension Track Length	Extension Track Width	Additional Extension Track P/N	Weight Lbs.	Weight kg.
24-150	10' (3.05m)	24BM8110	10' (3.05m)	3' 6", (1.09m)	S24BM8120	950	430.92
36-600	12' (3.66m)	48BM8190	10' (3.05m)	5' (1.52m)	S48BM8195	2600	1179.36
36/42-440	12' (3.66m)	S36BM8111	10' (3.05m)	5' 6" (1.70m)	S36BM8112	3000	1360
42-600	12' (3.66m)	48BM8190	10' (3.05m)	5' 6" (1.70m)	S48BM8195	3000	1360
48-900	13' (3.95m)	48BM8187	10' (3.05m)	5' 6" (1.70m)	S48BM8189	3500	1587
60-1200	13" (3.95m)	60BM8131	10' (3.05m)	7' 3" (2.22m)	S60BM8121	5600	2540.16
72-1200	15' (4.57m)	72BM8130	10' (3.05m)	8' (2.43m)	S72BM8140	6200	2812.32

*Purchase Note: Extension tracks purchased for 36/42-440, 48/54-900, 60-1200 NG or other future Next Generation (NG) Auger Boring Machine extension tracks will need to be returned to the manufacturer for proper machine-to-track timing.

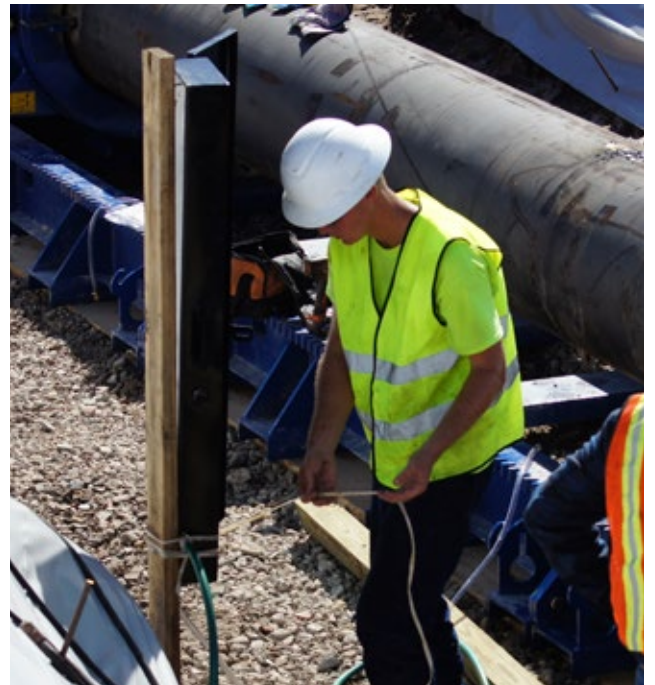
DUTCH LEVEL

The Dutch Level by American Augers, which works on the principles of nature is a must have when maintaining proper auger boring line and grade. Designed on the concept that water seeks its own level, the Dutch Level sensing head, welded from the front of the lead product casing, and is connected to the graduated cylinder with clear plastic tubing. The water level of the cylinder indicates the pitch of the casing, so with this knowledge any driller can make corrections to the grade of the bore.

Features and Benefits

- Permanent Metal Case
- Graduated Cylinder is Boldly Marked
- Already Plumbed with Corrosion Resistant Valves

Part Number	Description
691002	Dutch Level Assembly
677005	Sensing Head Block Weldment Assembly



STEERING HEAD KITS



Torque Multiplier One Size Fits All
01BT2434



Steering Knuckle Ass'y	Knuckle Mounting Kit Only
01BT6200	646007

Steering Hinges Casing Size	Part Number
12-14"	695011
13-34"	695012
36-60"	695013
66-96"	695014



Steering Rod End Kit One Pair Male/Female	Part Number
For 3/4" pipe	489010
For 1/2" pipe	489003
Poppet/Spring Kit	489004



B-114 BENTONITE MIXING SYSTEM



The B-114 by American Augers is a bentonite mixing system that was specifically designed for the auger boring contractor. It is equipped with a centrifugal pump that delivers mixes at 14 Gallons (52.99L)/per minute @ 200 PSI, 540 RPM (56 LPM, 1380 kPa) to use the bentonite to modify sticky soils into more manageable ground conditions.

Standard Features

- HP (5.97 kW) Gasoline Engine
- 114 Gallon (431.49 L) Tank

Part Number
02MP0001

Additional Features

- The B-114 pump will deliver the bentonite slurry to the lead casing under pressure to reduce friction and will produce a 5% gel concentration in 114 gallons of water, with use of one 50 lbs. (22.68 kg) bag of bentonite, but if soil conditions are very porous (mostly gravel etc.) a thicker gel may be used.
- The machine can also be employed, as a pressure washer during clean up time, or for pressure-testing water lines.

Standard Features

- Lubricates and supports the pipe while penetrating the soil
- Assures better grade
- Improves thrust capabilities
- Retards sloughing and cave-ins
- Extends equipment life
- Speeds up jacking operation

VANDALISM SHIELD



Boring Machine Model	Vandalism Shield P/N	Weight (lbs)
24/30-150	24BM9124	492
36/42-440	36BM9150	631
36-600	42BM9101	815
42-600	42BM9101	815
48/54-900	48BM9116	948
60-1.2	60BM9100	1140
72-1.2	72BM9100	1251

Fabricated from high grade steel, Vandalism Shields are a perfect compliment to any size American Augers auger boring machine as they:

- Cover vulnerable boring machine parts from unforeseen jobsite damage or defacement
- Protect against foul weather or from damage when hauling the machine on an open truck or trailer





**A AMERICAN
AUGERS®**

www.AmericanAugers.com