



VOLUME 1

MAXI RIG TOOLING & ACCESSORIES CATALOG



888-660-0793
RadiusHDD.com

RADIUS HAS PRODUCED LARGE PILOT TOOLS & ROCK BITS FOR **MAXI RIGS FOR OVER 10 YEARS WITH GREAT SUCCESS.**

Radius HDD Tools has risen to become a leading supplier of quality HDD tools to drilling professionals around the world. Our support and commitment to HDD contractors who count on us continues to drive every aspect of our company.

RADIUS MAXI RIG TOOLING & SUPPLIES

While a large number of our customers own both class of machines, we understand very well the unique requirements and challenges of large rig operations. We have organized the most comprehensive collection of tools, supplies, and accessories specifically for large rig operators and pipeline contractors. Maxi tool and reamer repairs, custom subs, and manufacturing services are also available.

RADIUS MAXI JOB SITE SERVICES

Our dedicated "Job Site Service Department" will manage the transport, delivery and logistics of items such as, pallets of mud, hardwood mats, mudmotors, pipe rollers, consignment tool and supply lockers, restroom facilities, and erosion control products. Call us today to discuss the requirements of your project and how we can help. Like you, we understand that success is all about up-time and efficiency.

Lastly, and probably most importantly, is the team of Radius professionals who are available most hours of the day or night in their effort to support our customers.

Place Your Order: 888-660-0793 RaduisHDD.com



TABLE OF CONTENTS

Threaded Subs & Adapters	5
Drive Chucks	6
Wireline Supplies	7
Sonde Housings	8
Pilot Tools	10
Rock Bits & Blade Adaptors	11
Bolt-On Housings & Dirt Blades	12
Drill Pipe	12
Reamers	14
Hole Openers	16
Reamer & Hole Opener Parts	17
Pulling Supplies	18
Repair Parts and Maintenance	19
Job Site & Safety Supplies	20
Rig Notes	23

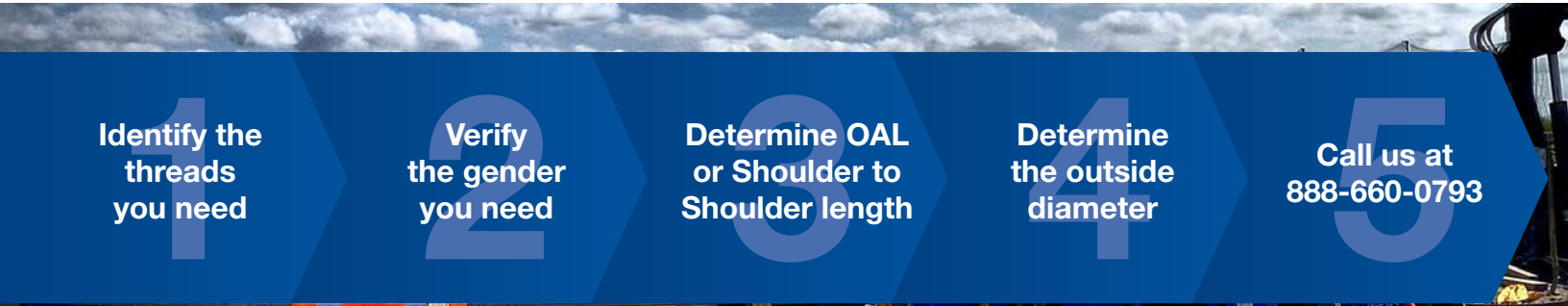
RADIUS IS YOUR GO-TO SOURCE FOR MAXI RIG CONNECTIONS.

Thread Identification Kit

The Radius thread ID kit makes it easy to know exactly what thread you have, or more importantly, which thread you need.

How To Order Custom Subs

In many cases custom sub orders are vital, a machine is down or a timeline is critical. We understand there is no room for errors or delays. Following the steps below will assist us in getting your custom sub right the first time – on time.



BUILD THE SUB YOU NEED ONLINE AT RADIUSHDD.COM

SAME DAY SHIPPING AVAILABLE WHEN TIME IS CRITICAL!

COMMON HDD MAXI THREADS

	Type	Material	PIN Dim		Box Dim		Thread		
			OD	Pin L	Pin ID	Box L	Box ID	Taper	TPI
2.875" IF	NC-31		4.125 "	3.5"	3.385	3.75"	2.5	2"	4"
2875" IF Double Shoulder	DS-31		4.125"	3.5"	3.385	3.75"	2.5	2"	4"
3.5" IF	NC-38		4.75"	4"	4.000	4.25"	3.25	2"	4"
3.5" IF Double Shoulder	DS-38		4.75"	4"	4.000	4.25"	3.25	2"	4"
4.5" IF	NC-46		6"	4.5"	4.828	3.75"	3.5	2"	4"
4" Full Hole	DS-40		5.25"	4.5"	4.270	4.75"	3.25	2"	4"
5.5" Full Hole	NC-55		7"	5"	5.828	5.5"	4.25	2"	4"
5.5" Full Hole Double Shoulder	DS-55		7"	5"	5.828	5.5"	4.25	2"	4"
6.625" Full Hole	NC-65		8"	5"	6.740	5.5"	5.5	2"	4"
4.5" API REG	API		5.25"	4.25"	5.515	5"	3.375	3"	5"
6.625" API REG	API		7.75"	5"	5.975	5.25"	4.75	2"	4"
7.625" API REG	API		8.875"	5.25"	6.975	5.5"	5.25	3"	4"
8.625" API REG	API		10"	5.375"	7.951	6.25"	6.625	3"	4"
3.5" Firestick (1000)	OEM		4.5"	3.5"	3.875	3.5"			3.5"
3.27"-4" DW (JT7020/8020/100)	OEM		4"	5.25"	3.312	5.25"			4"



COMMON HDD SUB AND ADAPTERS

	FS1000	FS900	FS800	3.5" IF	2.875" IF	3.5" REG	3.5" IF	4.5" REG	4.5" IF	5.5" FH	6.625" FH	4" Full Hole
2.875" IF (Internal Flush)	X	X	X	X	X	X						
2.875" IF DS (Double Shoulder)	X	X	X	X	X	X						
3.5" IF					X	X	X	X	X			
3.5" IF DS					X	X	X	X	X			
4.5" IF						X	X	X	X	X	X	
4" FH (Full Hole)												X
5.5" FH									X		X	
5.5" FH DS									X		X	
6.625" IF										X	X	

DRIVE CHUCKS & SAVER SUBS

Connecting the kelly to the pipe is critical. Radius drive chucks and saver subs are built to the exact specifications for your rig using heat treated alloys for maximum strength and durability. Radius also offers drive chucks with water swivels and wireline capabilities.

American Augers			
Part #	Rig Size	Common Thread Type	Connection
953-0378	DD110 / DD110S	2.875" IF Box x Pin	Kelly
953-0379	DD155TS	4.5" IF Box x Pin	Kelly
953-0379	DD-220T	4.5" IF Box x Pin	Kelly
953-0380	DD-440 / DD440T	6.625" FH Box x Pin	Kelly
953-0380	DD-625	6.625" FH Box x Pin	Kelly
953-0380	DD1100RS	6.625" FH Box x Pin	Kelly

Barbco			
Part #	Rig Size	Common Thread Type	Connection
953-0387	BD100-20SC	FS1 1000 Box x Pin	Kelly
953-0387	BD120-20SC	FS1 1000 Box x Pin	Kelly
953-0388	BD250-TK	3.5" IF Box x Pin	Kelly
953-0379	BD500-TK	4.5" IF Box x Pin	Kelly
953-0389	BD750-TK	5.5" IF Box x Pin	Kelly

Ditch Witch			
Part #	Rig Size	Common Thread Type	Connection
953-0041	JT100	3.27-4 Ditch Witch Drill Pipe (Small Flange)	Flange
953-0367	JT100	3.27-4 Ditch Witch Drill Pipe (Large Flange)	Flange
953-0268	AT100	3.44-4 Ditch Witch Drill Pipe	Flange

Universal			
Part #	Rig Size	Common Thread Type	Connection
953-0383	UNI 90x120	FS1 800	Flange
953-0384	UNI 90x120	FS1 1000	Flange
953-0390	UNI 100x120	FS1 1000	Flange
953-0385	UNI 100x120	3.5" HXT (FSII)	Flange
953-0386	UNI 120x180	DS-40 (4" Full Hole) Box x Pin	Kelly
953-0386	UNI 160x240	DS-40 (4" Full Hole) Box x Pin	Kelly
953-0379	UNI 220x240	4.5" IF Box x Pin	Kelly

Vermeer			
Part #	Rig Size	Common Thread Type	Connection
953-0195	100x120 SII / 100x140	FS 1000	Flange
953-0381	100x120 SII / 100x140	3.5" HXT (FSII)	Flange
953-0379	200x300	4.5" IF Box x Pin	Kelly
953-0382	330x500	DS 55 Box x Pin	Kelly
953-0380	500x500	6.625" FH Box x Pin	Kelly
953-0380	750x900	6.625" FH Box x Pin	Kelly
953-0380	1000x900	6.625" FH Box x Pin	Kelly
953-0380	1320x900	6.625" FH Box x Pin	Kelly





WIRELINER SUPPLIES



954-0438



954-0459



954-0460



954-0461



954-0462



954-0463, 954-0464
954-0465

Wireline Supplies	
Part #	Description
954-0438	Wireline Adapter Tool Kit
954-0459	Wireline Heat Shrink Tubing - HIM Black HS .375" x 4ft
954-0460	Wireline Wire - 10-19 Strand Copper Clad Wire, 1000ft Rolls
954-0461	Nicopress Aluminum Wireline Connectors (Side by Side) FW-2"-3.75"
954-0462	Wireline Crimping Tool #51 - for Aluminum Wireline Connectors (for use with Side by Side Crimps)
954-0463	Nylon Wireline Spider - for 2.875" IF Pipe
954-0464	Nylon Wireline Spider - for 3.5" IF Pipe
954-0465	Nylon Wireline Spider - for 4.5" IF / 5.5" FULL HOLE Pipe



THE MOST POPULAR SONDE HOUSING AMONG DRILLERS.

When it comes to large diameter sonde housings, no one offers more options than Radius.

Strong, dependable and built to last, big rig operators depend on our sonde housings every day to perform in even the toughest ground conditions. All Radius sonde housings are manufactured from a proprietary heat treated alloy to ensure both strength and durability.

Radius End Load Housings

The Radius end load sonde housing offers complete sonde protection, maximum fluid flow for use with mud motors and is wireline capable. But perhaps the most popular feature of the Radius end load sonde housing is the side access window. Only 2 inches in length, this patented feature poses no threat of sonde loss. It does allow for simplified sonde clocking, easy check of temperature indicator, and most importantly, aids in the removal of the sonde by way of flushing the cavity and pushing the transmitter out the rear of the housing. This last feature is only understood by drillers who know the difficulty of removing a sonde from a mud-filled end load housing.

All Radius End Load Housings feature:

- High Flow capacity for use with mud motors
- Wireline capabilities
- Compatible with both 15" & 19" DCI sondes



Radius End Load Housings		
Part #	Rig Class	Description
951-4501	80-100k	4.5" End Load Housing (2.875" IF Box x 2.875" Reg Box) add it above the 951-5001
951-5001	100-200k	5" OD End Load Housing (3.5" IF Box x 3.5" Reg Box)
951-6501	200-350k	6.5" OD End Load Housing (4.5" IF Box x 4.5" Reg Box)
951-8001	350k+	9" OD End Load Housing (6.625" Reg Box x 6.625" Full Hole Box)
951-8002	350k+	9" OD End Load Housing (6.625" IF Box x Box)



Radius Rock Housings

Definitely the most popular sonde housing among drillers, the Radius rock housing combines the strength and protection of an end load housing with the convenience and access of a side load unit. The patented reduced window design allows the housing to withstand much higher torque loads than common side load housings. This housing was specifically designed for drilling in tough conditions.

All Radius Rock Housings feature:

- High Flow capacity for use with mud motors
- Wireline capabilities
- Compatible with both 15" & 19" DCI sondes as well as Subsite and other popular transmitters



Radius Rock Housings		
Part #	Rig Class	Description
951-4500	80-100k	4.25" OD Rock Housng (2.875" Reg Box x 4.5" Radus Pin)
951-5005	100-200k	5" OD Rock Housing (3.5" IF Box x 3.5" Reg Box)
951-5006	100-200k	5" OD Rock Housing (3.5" Reg Box x 3.5" Reg Box)
951-6505	200-350k	6.5" OD Rock Housing (4.5" IF Box x 4.5" Reg Box)

PILOT TOOLS

Radius Cobble Bits

Ideal for loose rock, cobble and softer rock formations, the Radius cobble bit is also a good alternative in constantly changing ground conditions. Carbide buttons and hard facing help protect the tool while at work.

Cobble Bits				
Part #	Rig Class	Pilot Hole	Description	Connection
950-4505	80-100k	6"	4.5" Cobble Bit	2.875" Reg Pin
950-5005	100-200k	7"	5" Cobble Bit	3.5" Reg Pin



Cobble Bit

Single Roller Cone Bit

Another popular option for drilling in solid rock conditions is the Radius Single Roller Cone bit (SRC). While not very effective in soft soil or loose ground, the SRC bit performs well in solid rock formations up to 20,000-25,000 psi.

Single Roller Cone bits				
Part #	Rig Class	Pilot Hole	Description	Connection
950-4501	80-100k	7"	4.5" Single Roller Cone Bit	2.875" Reg Pin
950-5003	100-200k	9-10"	5" Single Roller Cone Bit	3.5" Reg Pin



Single Roller Cone Bit

Tricone & PDC bits

For mud motors and extreme hard conditions Radius features several lines of new tricone and Polycrystalline Diamond Compact (PDC) bits. By working with both drillers and US manufactures Radius has organized a line of tricones and PDC bits that deliver increased productivity and durability.

Tungsten Carbide Insert (TCI) TriCone Bits		
Part #	Tool Diameter	Description
950-1011	6.5"	3.5" Reg Pin
950-1012	6.75"	3.5" Reg Pin
950-1013	7.875"	4.5" Reg Pin
950-1014	8.5"	4.5" Reg Pin
950-1015	9.875"	6.625" Reg Pin
950-1016	12.25"	6.625" Reg Pin



Mill Tooth Tri-Cone Bit

Mill Tooth Tricone Bits		
Part #	Tool Diameter	Description
950-1017	6.5"	3.5" Reg Pin
950-1018	6.75"	3.5" Reg Pin
950-1019	7.875"	4.5" Reg Pin
950-1022	8.5"	4.5" Reg Pin
950-1020	9.875"	6.625" Reg Pin

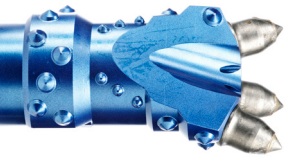


TCI Tri-Cone Bit

Polycrystalline Diamond Compact (PDC) Bits		
Part #	Tool Diameter	Description
950-1039	7.875"	4.5" Reg Pin, 5 Blade PDC Bit
950-1040	8.5"	4.5" Reg Pin, 5 Blade PDC Bit
950-1041	8.75"	4.5" Reg Pin, 5 Blade PDC Bit
950-1042	9.875"	6.625" Reg Pin, 6 Blade PDC Bit
950-1043	12.25"	6.625" Reg Pin, 6 Blade PDC Bit



PDC Bit



950-4500



950-5000



950-6500



950-8000

ROCK BITS

Rock tools are indeed the flagship of the Radius product line. We offer a wider selection than any aftermarket supplier and even some OEM's. And no one builds a better bit. Controlled cutting. Unsurpassed durability. Radius continues to be the best choice for HDD Professionals.

Radius Rock Bits

Our most versatile tool offers maxi rig operators greater steering and control in any type of soil conditions while letting you navigate loose rock and solid rock conditions up to 15,000 psi. Features that separate the Radius rock bit from other lesser designs include over sized carbide buttons that offer maximum durability while grinding cuttings in to smaller, more float-able size and a proprietary body geometry that provides greater control during the drill and improved responsiveness while carving or steering.

Rock Bits				
Part #	Rig Class	Pilot Hole	Description	Connection
950-4500	80-100k	7"	4.5" Radius Rock Bit	2.875" Reg Pin
950-5000	100-200k	8"	5" Radius Rock Bit	3.5" Reg Pin
950-5001	100-200k	8"	5" Radius Rock Bit	3.5" IF Pin
950-6500	200-350k	9-10"	6.5" Radius Rock Bit	4.5" Reg Pin
950-8000	350k+	12-14"	8.5" Brutus Bit	6.625" Reg Pin
950-8001	350k+	12-14"	8.5" Brutus Bit	4.5" IF Reg Pin

BLADE ADAPTORS

For conditions that do not require the use of a rock bit, Radius provides a wide selection of blade adapters and dirt tools designed to work on most any type of maxi sonde housing. Using blade adapters can extend the life of your rock tooling and increase steering performance in certain ground types.

Blade Adapters			
Part #	Rig Class	Description	Connection
952-0089	100-200k	5" OD Dirt Blade Adapter	3.5" Reg Pin x 6 BOLT Vermeer .625"-11
952-0090	100-200k	5" OD Dirt Blade Adapter	3.5" IF Pin x 6 BOLT Vermeer .625"-11
952-0137	100-200k	5" OD Dirt Blade Adapter	3.5" Reg Pin x 6 BOLT Vermeer .75"-10
952-0091	200-350k	6.5" OD Dirt Blade Adapter	4.5" Reg Pin x 6 BOLT Vermeer .625"-11
952-0138	200-350k	6.5" OD Dirt Blade Adapter	4.5" Reg Pin x 6 BOLT Vermeer .75"-10
952-0096	100-200k	5" OD Dirt Blade Adapter	3.5" Reg Pin x 6 BOLT Ditch Witch 20mm SHCS
952-0126	200-350k	6.5" OD Dirt Blade Adapter	4.5" Reg Pin x 6 BOLT Ditch Witch 20mm SHCS

BOLT-ON HOUSINGS & DIRT BLADES

When it comes to large diameter sonde housings, no one offers more options than Radius. Strong, dependable and built to last, big rig operators depend on our sonde housings every day to perform in even the toughest ground conditions.

Dirt Housings		
Part #	Rig Class	Description
952-0006	80k-150k	4.5" OD Side Load Dirt Housing (2.875" Reg Box x 6 BOLT Vermeer* 5/8" - 11 SHCS)
952-0135	150-200k	5" OD Side Load Dirt Housing (3.5" IF Box x 6 BOLT Vermeer* 3/4" - 10 SHCS)
952-0136	200-350k	6" OD Side Load Dirt Housing (4.5" IF Box x 6 BOLT Vermeer* 3/4" - 10 SHCS)

Dirt Blades - Vermeer* 6 bolt 5/8 - 11 Bolt Pattern		
Part #	Rig Class	Description
952-0047	100-200k	1" x 6" Rubble / Hard Faced
952-0133	100-200k	1" x 8" Rubble / Hard Faced
952-0139	100-200k	1" x 10" Rubble / Hard Faced

Dirt Blades - Vermeer* 6 bolt 3/4 - 10 Bolt Pattern		
Part #	Rig Class	Description
952-0140	200k+	1" x 6" Rubble / Hard Faced
952-0119	200k+	1" x 8" Rubble / Hard Faced
952-0141	200k+	1" x 10" Rubble / Hard Faced
952-0142	200k+	1" x 12" Rubble / Hard Faced

Larger sizes and custom blades are available. Call for details.

* Vermeer compatible bolt pattern

DRILL PIPE

Radius has negotiated dealer agreements with a number of leading pipe suppliers in both the HDD and oilfield industries. This allows us to offer an unmatched number of options when it comes to buying drill pipe. From new and used double white band to industry inspected yellow band used pipe – one rod or a truck load, let us help keep your rod cost in line.

Drill Pipe		
Part #	Length	Description
PIP-0021	15ft.	7020/8020/JT100 Drill Pipe (3.27-4 DW comp)
PIP-0027	20ft.	DD 100 x 120 / DD 100 x 140 Drill Pipe (FS-1000 comp)
PIP-0026	20ft.	2.875" IF Double Shoulder Drill Pipe
PIP-0020	15ft.	2.875" IF Drill Pipe
PIP-0022	20ft.	2.875" IF Drill Pipe
PIP-0028	15ft.	3.5" IF Drill Pipe
PIP-0029	20ft.	3.5" IF Drill Pipe
PIP-0030	20ft.	4.5" IF Drill Pipe
PIP-0024	20ft.	4" Full Hole Double Shoulder
PIP-0031	31ft.	5.5" Full Hole
PIP-0032	31ft.	5.5" Full Hole Double Shoulder

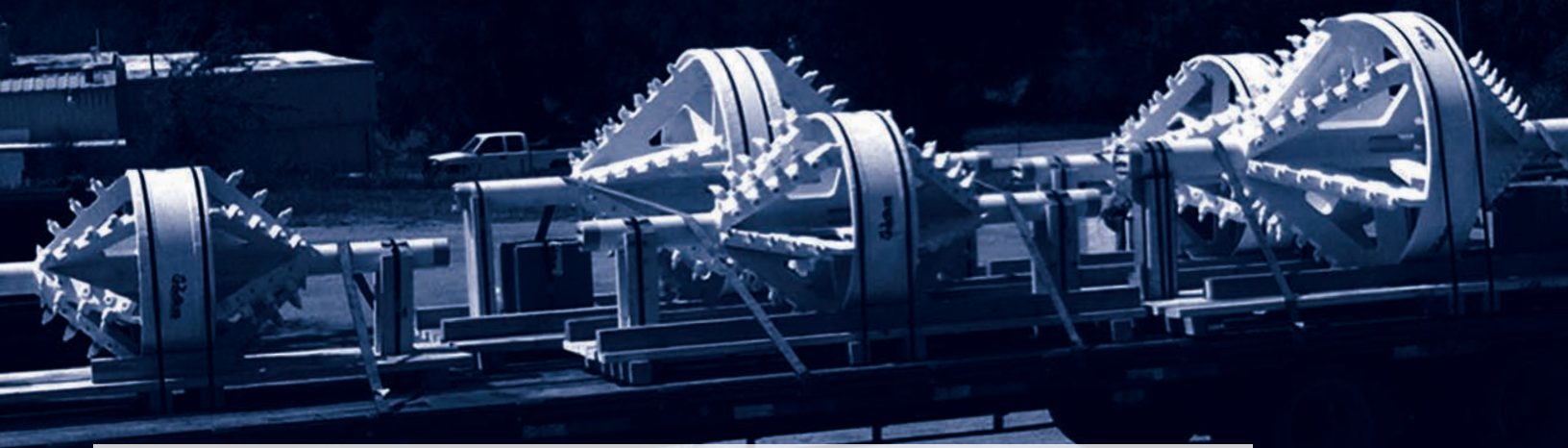




**RADIUS IS A
LEADING SOURCE
FOR NEW AND
RE-USED **MAXI RIG**
PIPE**

REAMERS

Radius designs and manufactures the largest selection of heavy duty reamers and hole openers specifically for maxi rig operations. Maxi projects require reamers engineered to a high level of quality. All reamers and hole opener shafts are machined from a 4140 or 4145 heat treated alloy for maximum thread and torque strength. A team of experienced welders understand preheating, cooling and other processes which are required to properly weld various types of metals that are used in all hole openers and reamers. Additionally, tungsten carbide and hard facing are applied to all heavy wear areas of each tool to maximize its performance and durability.



Barrel				
Shaft Size	4.75" OD	6.5" OD	7.25" OD	8.75" OD
Thread Type	3.5" IF	4.5" IF	5.5" FH	6.625" FH
12"	956-0282	956-0290	-	-
16"	956-0283	956-0291	-	-
20"	956-0284	956-0292	956-0301	956-0310
24"	956-0285	956-0293	956-0302	956-0311
30"	956-0286	956-0294	956-0303	956-0312
36"	956-0287	956-0295	956-0304	956-0313
42"	956-0288	956-0296	956-0305	956-0314
48"	956-0289	956-0297	956-0306	956-0315
54"	-	956-0298	956-0307	956-0316
60"	-	956-0299	956-0308	956-0317
72"	-	956-0300	956-0309	956-0318



Barrel Reamers

Barrel reamers can be run in tandem with a lead cutting reamer or alone as a compaction or swabbing tool. Radius barrel reamers are designed with front and rear fluid chambers to keep weight and fluid use to a minimum. Fluid ports are located on both ends of the reamer to allow bi-directional use to maximize the life of the tool, a heavy hatch pattern of hard-facing is applied to all wear surfaces. Carbide cutters on both faces assist with the hole development and to mix cuttings with drilling mud. Clean-out ports are located on each face as well for easy maintenance.

REAMERS CONTINUED

Flycutters

Designed for a variety of conditions from compact soils to soft rock. 3/4" or 1" rolled plate and cutter bars offer maximum cutter support and durability. Various removable nozzle configurations allow precise control over fluid volume and placement. 3/4" to 1" plasma cut structural components minimize deflection and offer increased suspension of cuttings & fluids for greater returns. Radius fly cutter reamers are available in single or bi-directional designs.

Bi-Directional Flycutters				
Shaft Size	4.75" OD	6.5" OD	7.25" OD	8.75" OD
Thread Type	3.5" IF	4.5" IF	5.5" FH	6.625" FH
12"	956-0247	-	-	-
16"	956-0248	956-0255	-	-
20"	956-0249	956-0256	956-0264	956-0273
24"	956-0250	956-0257	956-0265	956-0274
30"	956-0251	956-0258	956-0266	956-0275
36"	956-0252	956-0178	956-0267	956-0276
42"	956-0253	956-0259	956-0268	956-0277
48"	956-0254	956-0260	956-0269	956-0278
54"	-	956-0261	956-0270	956-0279
60"	-	956-0262	956-0271	956-0280
72"	-	956-0263	956-0272	956-0281

Stack Plate Reamers

Stack plate reamers offer many of the same design features of spiral fluted reamers but are available in larger diameters. Constructed with 1.25" plate stacks welded inside and out to offer unmatched durability and strength. Recent interior chamber designs have reduced the weight on many sizes by up to 20%.

Stack-Plate				
Shaft Size	5" OD	6.5" OD	7.25" OD	8.75" OD
Thread Type	3.5" IF	4.5" IF	5.5" FH	6.625" FH
12"	956-0319	-	-	-
16"	956-0032	956-0320	-	-
20"	956-0034	956-0321	956-0327	956-0333
24"	956-0035	956-0322	956-0328	956-0334
30"	956-0038	956-0323	956-0329	956-0335
36"	956-0041	956-0324	956-0330	956-0336
42"	-	956-0325	956-0331	956-0337
48"	-	956-0326	956-0332	956-0338



HOLE OPENERS

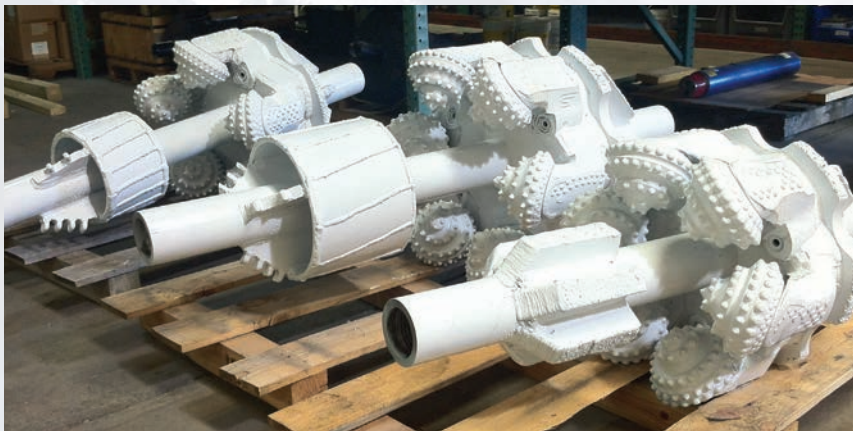
Maxi rig operators demand quality and performance. Radius understands there are no second chances on large jobs. Each of our hole openers are built from over-sized iron and multi-pass welds by a team of fabricators with a lifetime of experience in their craft.

The Radius “split-bit” hole openers are available in any size and can be assembled with a number of options including:

- New or used cone segments
- Mill tooth or TCI segments in a variety of grades
- Front centralizer
- Bi-directional cutters
- Fluid controls
- Shaft sizes (diameter & length)
- Thread connections or pulling eyes
- Numerous hard facing options

Common Hole Opener Sizes

Shaft Size	4.75" OD	6.5" OD	7.25" OD	8.75" OD
Thread Type	3.5" IF	4.5" IF	5.5" FH	6.625" FH
16"	956-0181	-	-	-
20"	956-0182	956-0186	-	-
24"	956-0183	956-0187	956-0195	956-0203
30"	956-0184	956-0188	956-0196	956-0204
36"	956-0185	956-0189	956-0197	956-0205
42"	-	956-0190	956-0198	956-0206
48"	-	956-0191	956-0199	956-0207
54"	-	956-0192	956-0200	956-0208
60"	-	956-0193	956-0201	956-0209
72"	-	956-0194	956-0202	956-0210



HOLE-OPENER & REAMER REPAIR COMPONENTS

Radius offers a complete selection of build and repair products for maintaining your fleet of reamers and hole openers. New and used cone segments, mill tooth, tungsten carbide insert (TCI), and most IADC grades are available with or without carbide nozzles. Reamer shafts and weld on cutters are also available.

Threaded Reamer Shafts

Overall length	3.5" IF Box x Box (4.75" OD)	4.5" IF Box x Box (6.5" OD)	5.5" FH Box x Box (7.25" OD)	6.625" FH Box x Box (8.75" OD)
48"	RMS-0019	RMS-0051	RMS-0044	RMS-0043
60"	RMS-0020	RMS-0023	RMS-0045	RMS-0026
72"	RMS-0021	RMS-0024	RMS-0046	RMS-0028
84"	RMS-0022	RMS-0002	RMS-0047	RMS-0029
96"	RMS-0035	RMS-0038	RMS-0048	RMS-0030
108"	RMS-0036	RMS-0039	RMS-0049	RMS-0041
120"	RMS-0037	RMS-0040	RMS-0050	RMS-0042



Weld-On Cutters

Part #	Description	Length	Width	Height
954-0079	Weld-On Conicle / Angle Base - LARGE	2.46"	1.38"	1.25"
954-0078	Weld-On Conicle / Angle Base - SMALL	2.26"	1.06"	1.26"
954-0498	Weld-On Conicle / Angle Base - EXTRA SMALL	1.35"	0.77"	0.82"
954-0077	Weld-On Shark Tool Cutter - LARGE	2.36"	0.72"	2.17"
954-0076	Weld-On Shark Tool Cutter - MEDIUM	1.5"	0.84"	1.77"
954-0075	Weld-On Shark Tool Cutter - SMALL	1"	0.5"	1.25"
954-0072	Weld-On Cutter Block - LARGE	0.77"	1.75"	2.24"
954-0074	Conical Tooth for LARGE Block	0.77"		3.36"



Single Replacement Cone Segments

Part #	Description
954-0586	7.875" TCI - Sealed Bearing Cutter Segment - NEW
954-0068	8.5" TCI - Sealed Bearing Cutter Segment - NEW
954-0587	9.875" TCI - Sealed Bearing Cutter Segment - NEW
954-0398	12.25" TCI - Sealed Bearing Cutter Segment - NEW
954-0531	7.875" MILL TOOTH - Sealed Bearing Cutter Segment - NEW
954-0532	8.5" MILL TOOTH - Sealed Bearing Cutter Segment - NEW
954-0533	9.875" MILL TOOTH - Sealed Bearing Cutter Segment - NEW
954-0397	12.25" MILL TOOTH - Sealed Bearing Cutter Segment - NEW
954-0493	9" TCI RANDOM Bit Third - Sealed Bearing Cutter - NEW
954-0494	12.25" TCI RANDOM Bit Third - Sealed Bearing Cutter - NEW
954-0570	17.5" TCI RANDOM Bit Third - Sealed Bearing Cutter - NEW



PULLING SUPPLIES

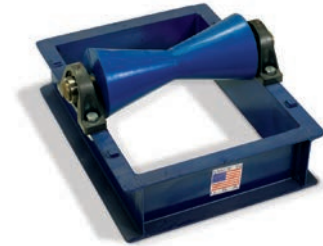
Polycam / Weld on Pullers

Part #	Size	Description
954-0625	12" Polycam Puller	650 Series Steel Pulling Head IPS
954-0626	16" Polycam Puller	650 Series Steel Pulling Head IPS
954-0627	20" Polycam Puller	650 Series Steel Pulling Head IPS
954-0628	24" Polycam Puller	650 Series Steel Pulling Head IPS
954-0629	36" Polycam Puller	650 Series Steel Pulling Head IPS
954-0630	48" Polycam Puller	650 Series Steel Pulling Head IPS
954-0631	12" Polycam Puller	651 Series Steel Pulling Head DIPS
954-0632	16" Polycam Puller	651 Series Steel Pulling Head DIPS
954-0633	20" Polycam Puller	651 Series Steel Pulling Head DIPS
954-0634	24" Polycam Puller	651 Series Steel Pulling Head DIPS
954-0635	36" Polycam Puller	651 Series Steel Pulling Head DIPS
954-0636	48" Polycam Puller	651 Series Steel Pulling Head DIPS



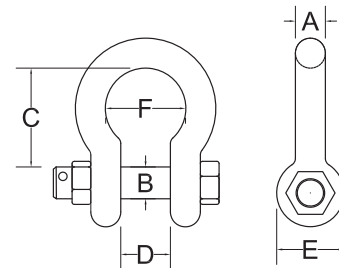
Pipe Rollers

Part #	Item	Size
954-0643	Dual Roller	4" x 16" Pipe
954-0642	Large Single Roller	12" x 30" Pipe
954-0727	Goliath Pipe Roller	30" x 48" Pipe



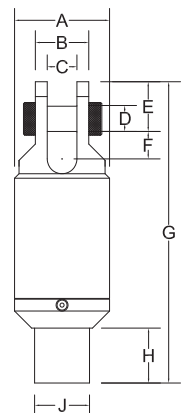
Bolt Syle Shackles

Part #	Size A	Tons	Diam. B	C	D	E	F	Weight
954-0112	1.375"	13.5	1.5"	5.312"	2.125"	3.25"	3.5"	13 lbs
954-0622	1.5"	17	1.625"	5.687"	2.312"	3.5"	3.75"	16.5 lbs
954-0623	1.75"	25	2"	7.062"	2.875"	4.25"	4.875"	29 lbs
954-0624	2"	35	2.25"	7.75"	3.312"	4.875"	5.437"	43 lbs
954-0637	2.25"	45	2.5"	9.25"	3.625"	5.25"	5.5"	59.5 lbs
954-0638	2.5"	55	2.75"	10.75"	4.125"	5.875"	7.25"	86 lbs
954-0639	3"	85	3.25"	13.75"	4.875"	6.75"	7.625"	119.5 lbs
954-0640	3.5"	120	3.75"	5.75"	2.125"	8.125"	9.5"	250 lbs
954-0641	4"	150	4.25"	6.625"	2.312"	9"	10.75"	358 lbs



DCD Box x Clevis Swivels

Part #	A	B	C	D	E	F	G	H	J	Box Thread	Tons
954-0612	10.75"	6"	3.25"	2.5"	4.75"	2.875"	35"	7.5"	6.625"	4.5" IF	110
954-0613	10.75"	6.5"	3.5"	3"	5.5"	3"	38"	7.5"	6.625"	4.5" IF	165
954-0614	12.5"	7"	4"	3.5"	6.5"	4"	41.875"	8.25"	7.75"	6.625" Reg	220
954-0647	14.5"	8.562"	4.5"	4"	7"	3.5"	2.437"	8.437"	8.5"	6.625" Full Hole	275
954-0615	16"	9"	5"	4.5"	8.5"	4.5"	50.687"	9.25"	9.25"	6.625" Full Hole	350
954-0616	19.5"	10.5"	5.5"	5.5"	9.75"	5.25"	55.562"	9.25"	9.25"	6.625" Full Hole	500
954-0618	19.5"	10.5"	5.5"	5.5"	9.75"	5.25"	55.562"	8.875"	8.5"	7.625" Reg	500
954-0619	23"	12.5"	6.5"	6.5"	11.5"	5.5"	65.437"	9.5"	9.25"	7.625" Reg	700



REPAIR PARTS & MAINTENANCE

Pump Parts (Valve Kit, Packing Kit & Ceramic or Stainless Cylinder)

Part #	Description
954-0515	1432 Value Kit
954-0516	1432 Packing Kit
954-0514	4" Ceramic Cylinder

*Pump parts provided for Kerr, Myers Apex, FMC and Ellis Williams Units

Recycler Parts (Screens, Hydrocones, & Aluminium or Polypropylene)

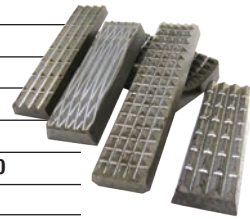
Part #	Size	Description
954-0620	49" x 25"	Cobra Screen
954-0484	46.5" x 28" x 1.25"	Flomax Black Metal 70 Screen
954-0485	46.5" x 28" x 1.25"	Flomax Black Metal 140 Screen
954-0621	24" x 36"	Triflow Jay Hook Style Screen

* Recycler Parts provided for Triflo, Mudtech, Kemtron, Derrick and American Auger Units



Vice Jaws

Part #	Item	Description
954-0571	Vice Jaw	4.125" Contour V-Die Jaw Insert - DD6 (New Style)
954-0573	Vice Jaw	.375" x 1" X 4.25" Jaw Insert - DD70, DD100, Astec 3238
954-0575	Vice Jaw	2.5" x .79" x 2" Jaw Insert - DD5, DD6 (Old Style)
954-0574	Vice Jaw	Jaw Insert - DD70, DD100
954-0094	Vice Jaw	3.875" x 1.25" x .5" Jaw Insert - VM D50/100, D80/100 - Uni 160/240 & DD110
954-0457	Vice Jaw	3.875" x 1.25" x .5" Diamond Pt Jaw Insert - VM D50/100, D80/100 - Uni 160/240, DD111
954-0578	Vice Jaw	5.875" x 1.25" x .5" Jaw Insert - VM VM 330/550
954-0576	Vice Jaw	3" x 1.25" x .5" Jaw Insert - DD180
954-0577	Vice Jaw	.5" x 1.25" x 2.5" Jaw Insert - DD6
954-0572	Vice Jaw	5.875" x 1.25" x .75" Jaw Insert - VM VM 330/550
954-0579	Vice Jaw	5.875" x 1.25" x 1" Jaw Insert - VM VM 330/550
954-0644	Vice Jaw	3.875" x 1.25" x .75" Jaw Insert - VM D50/100, D80/100 - Uni 160/240 & DD110
954-0645	Vice Jaw	3.875" x 1.25" x 1" Jaw Insert - VM D50/100, D80/100 - Uni 160/240 & DD110
954-0646	Vice Jaw	5" x 1.25" x .5" Jaw Insert - AA440T



Grease

Part #	Item	Description
954-0069	Kopr-Kote	JL Kopr-Kote Thr Lube, 5 Gal
954-0448	Kopr-Kote Eco	JL Eco-Safe Thr Lube, 5 Gal
954-0549	Dope Brush	30" OAL

Rod Wipers

Part #	Item	Description
954-0473	Dual Split Rod Wiper	3.5" ID x 14" OD
954-0474	Dual Split Rod Wiper	4" ID x 14" OD
954-0475	Dual Split Rod Wiper	4.5" ID x 14" OD
954-0476	Dual Split Rod Wiper	5" ID x 14" OD
954-0477	Dual Split Rod Wiper	6" ID x 14" OD



Batteries

Part #	Item
954-0402	CT-Silver Lithium Supercell
954-0403	CT-Blue Lithium
954-0404	Ni-CD Rechargeable Battery
954-0175	AA Batteries



CETCO Polymers / Additives

Part #	Item	Description
954-0580	Super Gel X	High Yield Bentonite 200 bbl, 50 lb Bags
954-0440	Hydraul-EZ	HDD Drilling Fluid Polymer Based Bentonite, 50 lb Bags
954-0581	DRILL-TERGE	Wetting Agent, 5 Gal Pail
954-0582	INSTA-VISPLUS	Liquid Drilling Polymer, 5 Gal Pail
954-0583	CLAYCUTTER	Clay Inhibitor, 5 Gal Pail
954-0584	SUPERTHIN	Drilling Fluid Thinner, 5 Gal Pail
954-0585	SODA ASH	Sodium Carbonate, PH Balancer



JOB SITE ACCESSORIES & SAFETY

Contractor supply houses are not always close when you need them. Fortunately we are! Radius stocks a complete line of popular HDD accessories and safety equipment to keep your jobsite running smooth. Don't see what you need? Call us. Odds are very good we can get it – fast!

Di-Electric gear		
Part #	Item	Description
954-0652	Servus Dielectric Boots	Size 8
954-0653	Servus Dielectric Boots	Size 9
954-0654	Servus Dielectric Boots	Size 10
954-0655	Servus Dielectric Boots	Size 11
954-0656	Servus Dielectric Boots	Size 12
954-0657	Servus Dielectric Boots	Size 13
954-0658	Linemans Glove Kits	Size 8 11" L
954-0659	Linemans Glove Kits	Size 9 11" L
954-0660	Linemans Glove Kits	Size 10 11" L
954-0661	Linemans Glove Kits	Size 11 11" L
954-0662	Linemans Glove Kits	Size 8 14" L
954-0663	Linemans Glove Kits	Size 9 14" L
954-0664	Linemans Glove Kits	Size 10 14" L
954-0665	Linemans Glove Kits	Size 11 14" L



Flame Resistant gear		
Part #	Item	Description
954-0671	Flame Resistant Coveralls	Royal Blue, Size Small
954-0672	Flame Resistant Coveralls	Royal Blue, Size Medium
954-0673	Flame Resistant Coveralls	Royal Blue, Size Large
954-0674	Flame Resistant Coveralls	Royal Blue, Size X-Large
954-0675	Flame Resistant Coveralls	Royal Blue, Size 2XL
954-0676	Flame Resistant Coveralls	Royal Blue, Size 3XL
954-0723	Flame Resistant Gloves	Medium
954-0724	Flame Resistant Gloves	Large
954-0725	Flame Resistant Gloves	XL
954-0726	Flame Resistant Gloves	2XL



Rain Gear		
Part #	Item	Description
954-0226	Rain Gear 35 Mil	Medium - Anchor Brand - Yellow
954-0227	Rain Gear 35 Mil	Large - Anchor Brand - Yellow
954-0228	Rain Gear 35 Mil	XL - Anchor Brand - Yellow
954-0229	Rain Gear 35 Mil	2XL - Anchor Brand - Yellow
954-0230	Rain Gear 35 Mil	3XL - Anchor Brand - Yellow
954-0231	Rain Gear - HD-PVC	Quality Luminator - Medium
954-0232	Rain Gear - HD-PVC	Quality Luminator - Large
954-0233	Rain Gear - HD-PVC	Quality Luminator - XL
954-0234	Rain Gear - HD-PVC	Quality Luminator - 2XL
954-0235	Rain Gear - HD-PVC	Quality Luminator - 3XL
954-0236	Ponchos	One size fits all



Pipe Tongs & Accessories		
Part #	Item	Description
954-0703	Petol Drill Pipe Tongs Only	3" - 8.25", 36" Handle
954-0704	Petol Special Chain Complete	7.25" - 8.25" OD
954-0705	Petol Drill Pipe Tongs Only	4.25" - 10.75", 36" Handle
954-0706	Petol Special Chain Complete	9.875" - 10.75" OD
954-0707	Petol Drill Pipe Tongs Only	4" - 14", 36" Handle
954-0708	Petol Special Chain Complete	13.75" - 14" OD
954-0709	Petol Bukup Tongs Only	4.25" - 10.75", 48" Handle
954-0710	Petol Bukup Special Chain	Complete, 9.5" - 10.75" OD
954-0711	Petol SLM Grip Tongs	1" - 2.25" OD, 16" Handle
954-0712	Petol SLM Grip Tongs	2.375" - 4" OD, 28" Handle
954-0713	Petol SLM Grip Tongs	3.75" - 6.5" OD, 33" Handle



Job Site & Safety

Part #	Item	Description
954-0197	First Aid Kit	Small Auto First Aid Kit
954-0648	Large First Aid Kit	Large 25 Person First Aid Kit
954-0649	Fire Extinguisher	B & C Fire Extinguisher, 10lb Potassium Bicarbonate
954-0650	Fire Extinguisher	B & C Fire Extinguisher, 20lb Potassium Bicarbonate
954-0651	Fire Extinguisher	B & C Fire Extinguisher, 4lb Sodium Bicarbonate
954-0157	Marking Flags	(100 PK) Green Neon
954-0158	Marking Flags	(100 PK) Pink Neon
954-0317	Marking Flags	(100 PK) Red
954-0318	Marking Flags	(100 PK) White
954-0319	Marking Flags	(100 PK) Green Neon
954-0177	Safety Netting	Orange Mesh 4' x 100'
954-0178	Safety Tape (Caution)	Yellow/Black 300' x 3"
954-0180	Safety Tape (Caution)	Yellow/Black 1000' x 3"
954-0179	Safety Tape (Danger)	Red/Black 1000' x 3"
954-0172	3 Gallon Water Cooler	Rubbermaid (Orange)
954-0171	10 Gallon Water Cooler	Rubbermaid (Orange)
954-0176	Traffic Cones	Orange / 28" H / 14" Base
954-0190	Safety Glasses - Amber	Crews Brand
954-0191	Safety Glasses - Gray	Crews Brand
954-0192	Safety Glasses - Clear	Crews Brand
954-0193	Safety Glasses - Mirror	Crews Brand
954-0194	Safety Glasses - Green	Crews Brand
954-0195	Safety Glasses - In/Outdoor	Crews Brand
954-0187	Back Support	Large - Black
954-0188	Back Support	XL - Black
954-0189	Back Support	XXL - Black
954-0666	Ear Plugs	Moldex w/ Cord Box -100 Pairs NRR 33db
954-0220	Safety Vest	Q - TWO Tone S/M
954-0221	Safety Vest	Q - TWO Tone L/XL
954-0222	Safety Vest	Q - TWO Tone 2XL/3XL
954-0223	Safety Vest	Orange - Safety Vest LG
954-0224	Safety Vest	Orange - Safety Vest XL
954-0225	Safety Vest	Orange - Safety Vest 1 Size fits All
954-0667	Disposable Respirators	Moldex (Dirt Dawgs) Particulate Respirators
954-0668	Halfmask Cartridge Respirators	3M
954-0669	Respirator Cartridges	3M (Fits 954-0668 Respirators)
954-0670	Respirator Filters	3M (Fits 954-0669 Cartridges)
954-0181	Full Brim High Visibility Hard Hat	Fluorescent Yellow
954-0349	Full Brim High Hard Hat	Orange
954-0350	Full Brim High Hard Hat	White
954-0186	Standard Hard Hat	Yellow
954-0182	Standard Hard Hat	White





MAXI.
NO PROBLEM.



radius[®]
TOOLS FOR HDD PROFESSIONALS